

Common Problems

1. I am having trouble connecting with an '02 Audi A4.

This vehicle does pose connection issues with most aftermarket tools. Please continue to retry the connection.

2. I am having trouble getting good data rates on a specific controller.

Audi/VW consolidated sensors into groups. Some sensor groups can update at slower rates than others. Typically, this is text-based sensors on non-critical models like Telephone or Climate control. To resolve this select only those sensors that are important to you until you reach a saturation point for the data throughput.

3. My connection times seem slow.

Pre-CAN cars are slow. Even with the factory scan tool, connections take several minutes. Data rates are between 4hz and 6hz in most cases. The AutoEnginuity ScanTool product will actually be faster than the factory tool in almost all cases because we don't need to interrogate the controller for version information.

4. How do I reset the service interval light on my Audi/VW vehicle?

To reset the service interval for an Audi/VW, go to the *Test OnBoard System* tab and select the SRI Reset function. Please follow the steps in the software along-side your vehicle's service information.

5. I am having trouble connecting with OBD-II on my Canadian '96 - '97 Audi/VW vehicle.

In Canada, OBD-II wasn't required until '98. Some Jettas and Golfs with the 1.8 liter engine sold in '96 and '97 are not OBD-II compliant.

6. Why don't I have sensor descriptions?

Sensors vary based on installed modules and, at this time, we have not had access to that module to pull the sensor descriptions for our coverage. When selecting a sensor, if the vehicle provides a generic description for it, we will update the sensor name in real-time. As more sensor descriptions become available, we will implement them into ScanTool updates.

If you still need help, consult the User Guide or contact us:

email: support@autoenginuity.com

phone: 1-480-827-TOOL (8665)

Enhanced Audi/VW User Guide

READ ME FIRST!

!WARNING!

Audi / VW Jetta and Golf '00 and '01 Airbag Module Issues

- *Jetta and Golf '00 and '01 airbag controllers with the module serial number of 6Q0909605A cannot be accessed with ANY diagnostics tool. If you do attempt a connection, the controller unit can be irreparably damaged and will need to be replaced.*

Before Getting Started

Enhanced Audi/VW will allow you to access systems not available with generic OBD-II. The enhanced Audi/VW option is an add-on to the AutoEnginuity ScanTool. To offer this support, the enhanced Audi/VW option utilizes proprietary electronics in the ST06 ProLine hardware.

Check to make sure that your ScanTool is already properly installed and that the enhanced option(s) are activated. Please see your ScanTool User Guide for instructions if necessary.

Connecting to the Vehicle

WARNING: DO NOT USE A POWER INVERTER WITHOUT AN "ISOLATED GROUND" WITH ANY USB PRODUCT CONNECTED TO YOUR VEHICLE. A GROUND LOOP MAY OCCUR.

1. Start the ScanTool software.
2. Connect the ProLine connector to your computing device.
3. Connect the other end of the ProLine connector to your vehicle's DLC.
4. The ScanTool will now connect to the vehicle. If you do not see the connection screen, press F2 or select *Vehicle / Connect*.

5. Once connected to the vehicle, the ScanTool will require you to select the vehicle model information. Selecting this information correctly is very important to obtaining reliable data. You may use the *GetVIN* on model years 2004 and later if the vehicle supports VIN retrieval.
6. Select your system at the bottom of the Vehicle Selection screen. By default the system selected is Enhanced Powertrain. If the system you select is not present or operating, the ScanTool software will display an alert and require you to select another system before continuing.
7. Click *OK* once the vehicle model information and the system are selected.
8. The connection phase will finalize by retrieving the trouble codes from all of the vehicle systems present. This can take up to 60 seconds.
9. Congratulations, you are now connected to your Audi/VW!

Operating Instructions

Please note: These instructions are not to be used as a replacement for factory service information, but to work along-side it. Proper operation of all vehicle functions will only be provided in the factory service documentation.

Trouble Codes

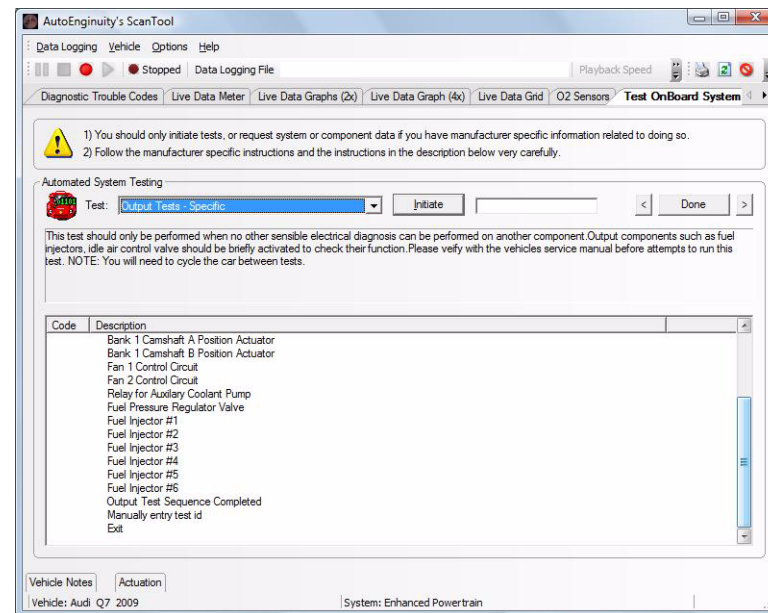
The ScanTool will default to showing you any trouble codes that may be present on the vehicle. Retrieving/Clearing DTCs from all systems will take longer to perform than any other enhanced interface option due to the slower baud rates of older Audi/VW controllers.

Live Data

Watching live data is very important to servicing your vehicle, so we offer three ways to view it. The live data *Meters*, *Grid*, and *Graph* tabs operate the same way as the basic kit. Please note that Audi/VW is different from any other enhanced interface option due its reliance on sensor groups. Sensor groups are a consolidation of sensors related to a specific service issue. Your vehicle service guide will request you select specific sensor groups and sensor numbers. We will display the list of sensors for each group with a sensor number at a minimum. In most cases, we will also be able to translate the sensor number for the sensor description.

Actuation

Audi/VW does not support component-level actuations in a traditional sense. See *Test OnBoard Systems* for any system-level tests and the “Output Tests - Specific” if the vehicle support’s this feature.



Test OnBoard Systems

The *Test OnBoard Systems* tab is available to run those tests that can only be operated in isolation and require the complete control of the vehicle and the software. Here you will find the ADC Channel, Adaptation, Basic Settings, Login, Module Coding (Soft and Long), Module Sensor Mapping, Network Test, Output Tests, Optical Bus Diagnostics, SRI Reset, and Transport Active/Deactivate Mode features.

Common Basic Settings :

Gas Engines

- 071 EVAP Diagnostics
- 030 Oxygen Sensors
- 070 EVAP Tank Venting
- 034 Oxygen Sensor Aging
- 043 Catalyst Aging
- 036 Oxygen Sensor
- 098 Idle Adaptation
- 060 Idle Adaptation
- 000 Transmission Adaptation
- 001 Transmission Adaptation

WARNING: DO NOT ACTUATE ANY COMPONENT OR RUN ANY TEST WITHOUT FOLLOWING AUDI/VW DOCUMENTED PROCEDURES. AUTOENGINUITY IS NOT LIABLE FOR THE IMPROPER ACTUATION OF COMPONENTS OR TESTS.