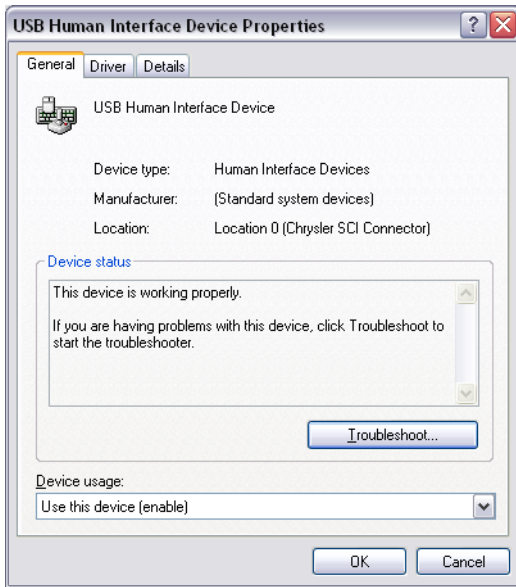


Properties. Examine the General tab to verify that the Location matches the following sample:



3. My serial version of the AutoEnginuity Enhanced Interface connector has power, but it is not working.

The serial AutoEnginuity Enhanced Interface connector can *not* be operated through a USB-to-serial adaptor. If you are using one, please remove it and use a computer with a serial interface.

Finally, the AutoEnginuity ScanTool software will only search for the AutoEnginuity Enhanced Interface connector on COM ports 1-9. If you need to change the COM Port, please right-click *My Computer*. Select *Properties*. Click the *Hardware* tab. Finally, click the *Device Manager* button. Under *Port* look for an entry called “AutoEnginuity Enhanced Interface”. Right-click on it and select *Properties*. Finally, select the *Advanced* button on the lower-right of the window. Select a COM port that is not in use and is between 1 and 9. Close the windows by clicking *OK* and reattempting the connection.

4. After starting the vehicle the connection is lost or the live data reports all zeros.

The AutoEnginuity Enhanced Interface connector draws power from the vehicle. In the case that the data link communication line is electrically spiked or power to the data link connector is disturbed, the connection can be lost. In this case, please connect to the vehicle in the KOER state.

Enhanced Honda User Guide

READ ME FIRST!

Check Your Package Contents

Your AutoEnginuity Honda package should contain:

- 1 x AutoEnginuity Enhanced Interface connector
- 1 x 6ft Mini-USB cable *or* 6ft NULL serial cable

NOTE: If *any* of the above items are missing, please contact your reseller

Before Getting Started

Enhanced Honda will allow you to access systems not available with generic OBD-II. The enhanced Honda option is an add-on to the AutoEnginuity ScanTool. To offer this support, the enhanced Honda option utilizes a proprietary Honda electrical interface built-in to the AutoEnginuity Enhanced Interface. Because of the complexity of the electrical interfaces, we currently are required to put Honda support on its own hardware outside of the OBD-II interface.

Check to make sure that your ScanTool program is already properly installed and that the enhanced option(s) are activated. Please see your ScanTool User Guide for instructions if necessary.

Connecting to the Vehicle

WARNING: DO NOT USE A POWER INVERTER WITHOUT AN “ISOLATED GROUND” WITH ANY USB PRODUCT CONNECTED TO YOUR VEHICLE. A GROUND LOOP MAY OCCUR

1. Start the ScanTool software.
2. Connect the AutoEnginuity Enhanced Interface to the computing device. (No devices drivers are necessary as this device is Plug and Play. Your operating system will provide this support.)

3. Connect the AutoEnginuity Enhanced Interface to your vehicle's DLC. (See your *ScanTool User Guide* if you need help finding the DLC location.)
4. Check the lights on the back of the AutoEnginuity Enhanced Interface for correct operation. A red LED signifies that there is sufficient power to operate the hardware interface. The amber/yellow LED (USB version *only*) is used to determine if the hardware interface has successfully enumerated with your operating system. Finally, the green LED signifies an exchange of data between the hardware interface and the computing device.
5. The ScanTool will now connect to the vehicle. If you do not see the connection screen, press F2 or select *Vehicle | Connect*.
6. Once connected to the vehicle, the ScanTool will require you to select the vehicle model information. Selecting this information correctly is very important to obtaining reliable data. If the vehicle's VIN is decoded, this information should already be set for you. Even so, it is imperative that you verify all of the selections in case the VIN can't be completely decoded. (Please note that Honda VINs are only available on some models after 2001 and all models after 2005.)
7. Select your system. By default the system selected is Enhanced Powertrain.
8. Click *OK* once the vehicle model information and the system are selected.
9. The connection phase will finalize by retrieving the trouble codes from all of the vehicle systems present. This can take up to 30 seconds.
10. Congratulations, you are now connected to your Honda vehicle!

WARNING: DO NOT ACTUATE ANY COMPONENT OR RUN ANY TEST WITHOUT FOLLOWING HONDA'S DOCUMENTED PROCEDURES. AUTOENGINUITY IS NOT LIABLE FOR THE IMPROPER ACTUATION OF COMPONENTS OR TESTS.

Common Problems

1. After successfully connecting to my Honda vehicle, I only see Generic Powertrain as the System option.

Make sure that you are using the AutoEnginuity Enhanced Interface. Since Honda has proprietary electrical interfaces, enhanced support is not available on the OBD-II interface.

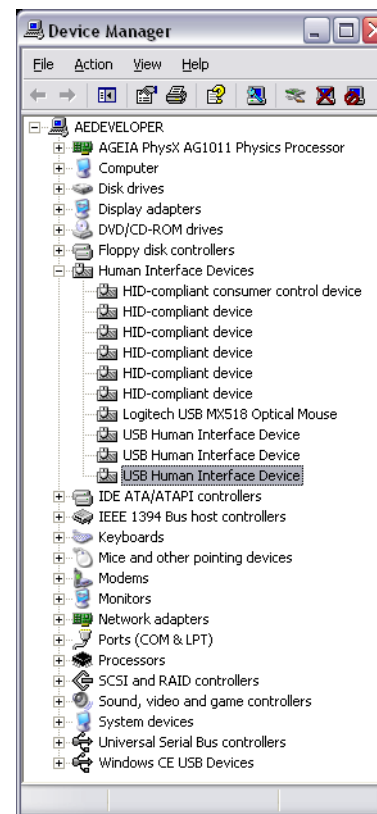
If you are correctly cabled, you may not have the enhanced Honda option activated. Please go to *Help | Feature Activation* in the ScanTool software and verify that Honda is highlighted in green. If it is not, please follow the email activation instructions. (See *ScanTool User Guide* for complete instructions.)

2. My USB version of the AutoEnginuity Enhanced Interface connector has power, but it is not connecting.

Make sure that you are using version 5.0 or later of the ScanTool software. To determine the version of the software you are using, go to *Help | About* in the ScanTool software.

If the software is at least 5.0, check to make sure that the AutoEnginuity USB AutoEnginuity Enhanced Interface is enumerating on your computing device. You can do this by checking your Device Manager using the following steps:

Right-click *My Computer*. Select *Properties*. Click the *Hardware* tab. Finally, click the *Device Manager* button. Under *Human Interface Devices* look for an entry called *USB Human Interface Device*.



If you don't see it there, please reconnect to the vehicle and try again. If you see multiple HID entries you can verify which one is the AutoEnginuity Enhanced Interface by unplugging and plugging into the computing device while watching for an entry being added or removed. Also, you can right-click on an HID entry and select