

## Common Problems

---

### 1. I can only connect to the engine and transmission systems.

Please verify that you are using the 16pin to 16pin Hyundai/Kia Body and Chassis adaptor cable. Without it, most of the vehicle's controllers will not be visible to our enhanced Hyundai/Kia option.

### 2. I select a system, but I keep getting the error that the system is not present or operating. I do have the adaptor cable inlined.

Before a system is connected to, a network test is initiated to check if the controller is equipped and/or operating. If the warning appears please verify that controller is present. If you are sure it is, then try cycling the key and resetting controller.

### 3. I click the Clear button, but several lights are still present.

Please try cycling the ignition key. It will allow the final reset step to take.

## Enhanced Hyundai/Kia User Guide

**READ ME FIRST!**

## Check Your Package Contents

---

### Your AutoEnginuity Hyundai/Kia package should contain:

- 1 x 1ft 16pin - 16pin Hyundai/Kia Body and Chassis adaptor cable

**NOTE:** If *any* of the above item(s) are missing, please contact your reseller.

## Before Getting Started

---

Enhanced Hyundai/Kia will allow you to access systems not available with generic OBD-II. The enhanced Hyundai/Kia option is an add-on to the AutoEnginuity ScanTool. To offer this support, the enhanced Hyundai/Kia option utilizes a proprietary adaptor cable. This cable will be used inline of the OBDII interface and the vehicle for all body and chassis controllers.

Check to make sure that your ScanTool is already properly installed and that the enhanced option(s) are activated. Please see your ScanTool User Guide for instructions if necessary.

## Connecting to the Vehicle

---

**WARNING:** DO NOT USE A POWER INVERTER WITHOUT AN "ISOLATED GROUND" WITH ANY USB PRODUCT CONNECTED TO YOUR VEHICLE. A GROUND LOOP MAY OCCUR.

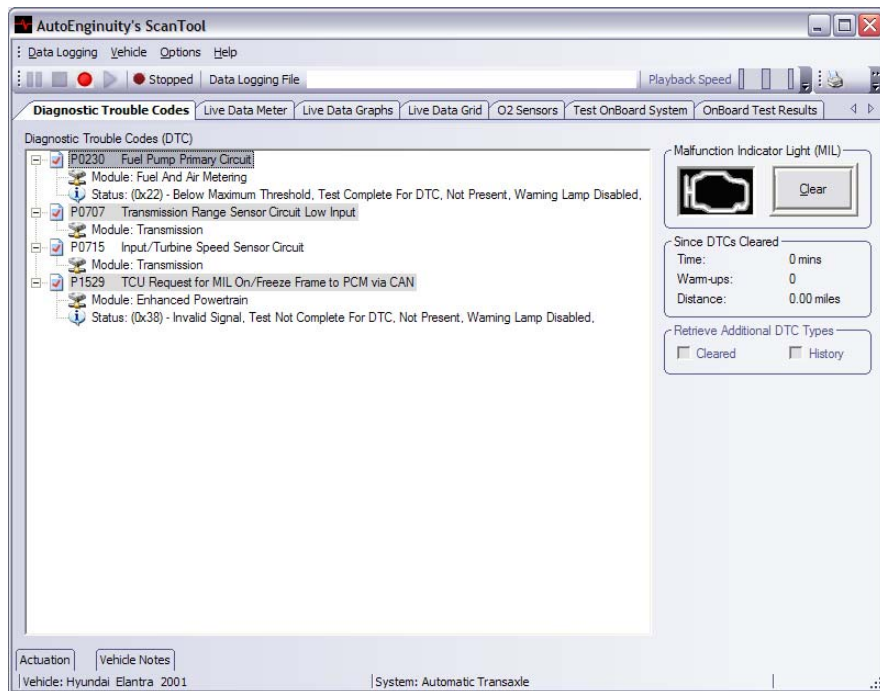
1. Start the ScanTool software.
2. Connect the OBD-II connector to your computing device.
3. If you are going to be scanning body and chassis controllers, please connect the Hyundai/Kia adaptor to the OBD-II connector and other end to the vehicle's DLC. (See your *ScanTool User Guide* if you need help finding the DLC location.)
4. The ScanTool will now connect to the vehicle. If you do not see the connection screen, press F2 or select *Vehicle | Connect*.

- Once connected to the vehicle, the ScanTool will require you to select the vehicle model information. Selecting this information correctly is very important to obtaining reliable data. You may use the GetVIN option on model years 2005+.
- Select your system at the bottom of the Vehicle Selection screen. By default the system selected is Enhanced Powertrain. If the system you select is not present or operating, the ScanTool software will display an alert and require you to select another system before continuing.
- Click *OK* once the vehicle model information and the system are selected.
- The connection phase will finalize by retrieving the trouble codes from all of the vehicle systems present. This can take up to 60 seconds.
- Congratulations, you are now connected to your Hyundai/Kia!

## Operation Instructions

### Trouble Codes

The ScanTool will default to showing you any trouble codes that may be present on the vehicle. The software will decode the engine, transmission, ABS, airbag, and central body controllers for you. Please refer to Hyundai/Kia's service site or another reference site for service information related to any reported trouble codes.



For later models, Status information will report with the fault code. Status information will report why the code was set by the controller.

### Live Data

Watching live data from your vehicle is very important to servicing your vehicle so we offer three ways to view it. The live data Meters, Grid, and Graph tabs operate the same as the basic kit. One thing to note is that some Hyundai/Kia controllers send multiple sensor responses in a single transmission, so you will see data update in "chunks".

### Actuation

To reset adaptations or actuate a solenoid, use the Actuation window. This dockable window is normally available at the bottom of the ScanTool screen as a tab. This window's controls will only be enabled when you are on any of the live data tabs (Meter, Grid, or Graph). Hyundai/Kia actuations typically are only toggle states; meaning once you select them, they will actuate and the check box will deselect. Most actuations require the vehicle to be in a certain state to operate. You may see instructions for an actuation on the far right.

**WARNING: DO NOT ACTUATE ANY COMPONENT OR RUN ANY TEST WITHOUT FOLLOWING HYUNDAI/KIA'S DOCUMENTED PROCEDURES. AUTOENGINUITY IS NOT LIABLE FOR THE IMPROPER ACTUATION OF COMPONENTS OR TESTS.**

Command Name	Commanded	Units	Instructions/Notes
<input type="checkbox"/> A/T Control Relay	Activate		Requires the key On, engine Off, transaxle range P. Test duration is 5 seconds
<input type="checkbox"/> Intelligent Shift Prohibited	Activate		Requires the key On, engine Off, transaxle range P. Test duration is 5 seconds
<input type="checkbox"/> Low Reverse Solenoid Valve	Activate		Requires the key On, engine Off, transaxle range P. Test duration is 5 seconds
<input type="checkbox"/> Overdrive Solenoid Valve	Activate		Requires the key On, engine Off, transaxle range P. Test duration is 5 seconds
<input type="checkbox"/> Second Solenoid Valve	Activate		Requires the key On, engine Off, transaxle range P. Test duration is 5 seconds
<input type="checkbox"/> Damper Clutch Control Solenoid Val...	Activate		Requires the key On, engine Off, transaxle range P. Test duration is 5 seconds
<input type="checkbox"/> Underdrive Solenoid Valve	Activate		Requires the key On, engine Off, transaxle range P. Test duration is 5 seconds

### Test OnBoard Systems

The Test OnBoard Systems tab is available to run those tests that can only be operated in isolation and require the complete control of the vehicle and the software.