

Common Problems

1. I cannot get the ScanTool to auto connect to a Cayenne.

The Porsche Cayenne is not OBD-II compliant. For this vehicle you will have to manually select the proper connection settings. Select *Vehicle | Communication Configuration*. Change the Vehicle Interface Type to ISO9141-2 and the Initialization Type to Non-OBDII Only.

NOTE: THE O2 SENSOR AND ONBOARD TEST RESULTS TAB DO NOT WORK WHEN CONNECTED WITH THE NON-OBD-II-ONLY SETTING.

2. I am connected with the key in the ignition, but the connection won't complete.

First, always make sure that the key is turned to the ON position. Porsches require a turn past the steering lock to engage the vehicle controllers. Visually inspect the instrument cluster to ensure that the warning lights are be illuminated. Finally, Porsche has recessed their DLC connector so diagnostics equipment will fit snugly. Ensure that your connection is firm and snapped in completely.

3. I can't reset fault codes from the Alarm controller.

This controller uses a security access to reset faults. We do not support this security access function.

4. I received an Unknown Trouble Code Description, where can I get the complete description?

Although we have taken great measures to ensure all trouble code descriptions are provided. We have found that Porsche has not completely documented their trouble code library. Even when using the factory tool, you can still receive the "Unknown Trouble Code" message.

5. I want to reset my service reminder but can't find the support.

This support was added for model year 2005 and later vehicles. To operate the function, go to *Test OnBoard System* and select the *Reset Service Reminder* selection from the *Test* list. Simply click *Initiate* to perform the reset function.

6. I don't understand what the Service Now instrument cluster light designates?

This is similar to the Check Engine or Service Engine Soon of OBD-II. It is an indicator that a fault is stored

Enhanced Porsche User Guide

READ ME FIRST!

Check Your Package Contents

Your AutoEnginuity Porsche package should contain:

- 1 x 1ft 16pin - 16pin Porsche adaptor cable

NOTE: If *any* of the above item(s) are missing, please contact your reseller.

Before Getting Started

Enhanced Porsche will allow you to access diagnostics trouble codes from systems not available with generic OBD-II. The enhanced Porsche option is an add-on to the AutoEnginuity ScanTool. To offer this support, the enhanced Porsche option utilizes a proprietary adaptor cable.

Check to make sure that your ScanTool is already properly installed and that the enhanced option(s) are activated. Please see your ScanTool User Guide for instructions if necessary.

Connecting to the Vehicle

WARNING: DO NOT USE A POWER INVERTER WITHOUT AN "ISOLATED GROUND" WITH ANY USB PRODUCT CONNECTED TO YOUR VEHICLE. A GROUND LOOP MAY OCCUR.

1. Start the ScanTool software.
2. Connect the OBD-II connector to your computing device.
3. Connect the Porsche adaptor to the OBD-II connector and other end to the vehicle's DLC. (See your *ScanTool User Guide* if you need help finding the DLC location.)
4. The ScanTool will now connect to the vehicle. If you do not see the connection screen, press F2 or select *Vehicle | Connect*. (Exceptions: For Cayenne, which is

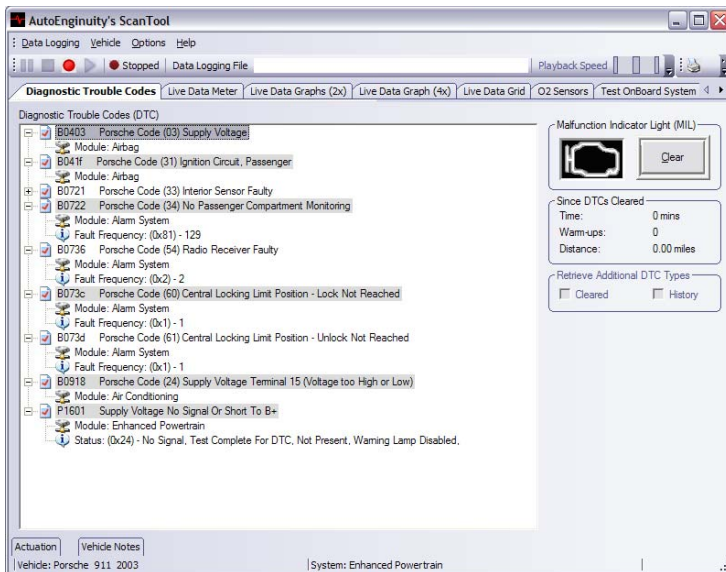
non-OBD-II compliant. Select *Vehicle | Communication Configuration*. Change the Vehicle Interface Type to ISO9141-2 and the Initialization Type to Non-OBD-II Only.)

5. Once connected to the vehicle, the ScanTool will require you to select the vehicle model information. Selecting this information correctly is very important to obtaining reliable data. You may use the GetVIN button on model years 2003 and later (except Cayenne) if the vehicle supports VIN retrieval.
6. Select your system at the bottom of the Vehicle Selection screen. By default the system selected is Enhanced Powertrain. If the system you select is not present or operating, the ScanTool software will display an alert and require you to select another system before continuing.
7. Click *OK* once the vehicle model information and the system are selected.
8. The connection phase will finalize by retrieving the trouble codes from all of the vehicle systems present.
9. Congratulations, you are now connected to your Porsche!

Operation Instructions

Trouble Codes

The ScanTool will default to showing you any diagnostics trouble codes that may be present on the vehicle. The software will decode any diagnostics trouble codes for the engine, transmission, ABS, airbag, and central body controllers for you.



Please refer to Porsche's service site or another reference site for any service information.

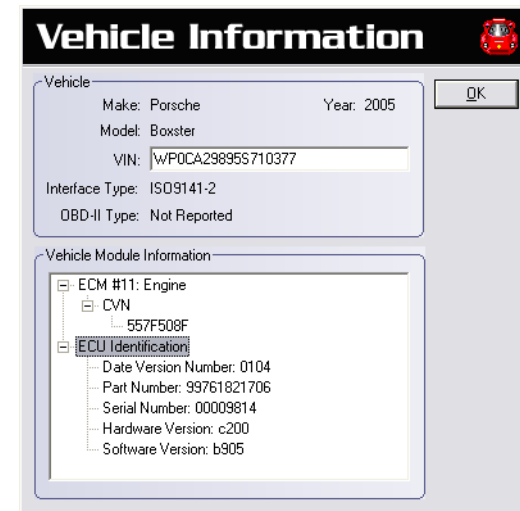
The trouble code number convention is slightly modified for Porsche. If you look at the previous example you will see the B0403 trouble code. The 'B' refers to the type of code. 'B' is for Body as you would expect. The first two alpha numerics are used for the system ID. In this example 04 is the Airbag controller. The next two alpha numerics are the actual Porsche code. If the software supports the decoding of the Porsche fault code, it will display the description on the top-most line of the trouble code entry. Like the OBD-II trouble codes, you can get more information by selecting the (+) plus sign to the left of the trouble code entry. This will display more detailed information such as the fault frequency or any Freeze Frame information.

Live Data and O2 Sensor

The live data reported from the vehicle is available only through Generic OBD-II. Ensure that you select *Generic OBD-II* when you are at the *Vehicle Selection* prompt.

Vehicle Information

The *Vehicle | Vehicle Information* menu selection allows you to view the Porsche-specific part information. Each controller will report different information (some will report none at all). What the controller does support will be correctly formatted and displayed.



Test OnBoard Systems

The Test OnBoard Systems tab is available to run those tests that can only be operated in isolation and requires complete control of the vehicle and the software.